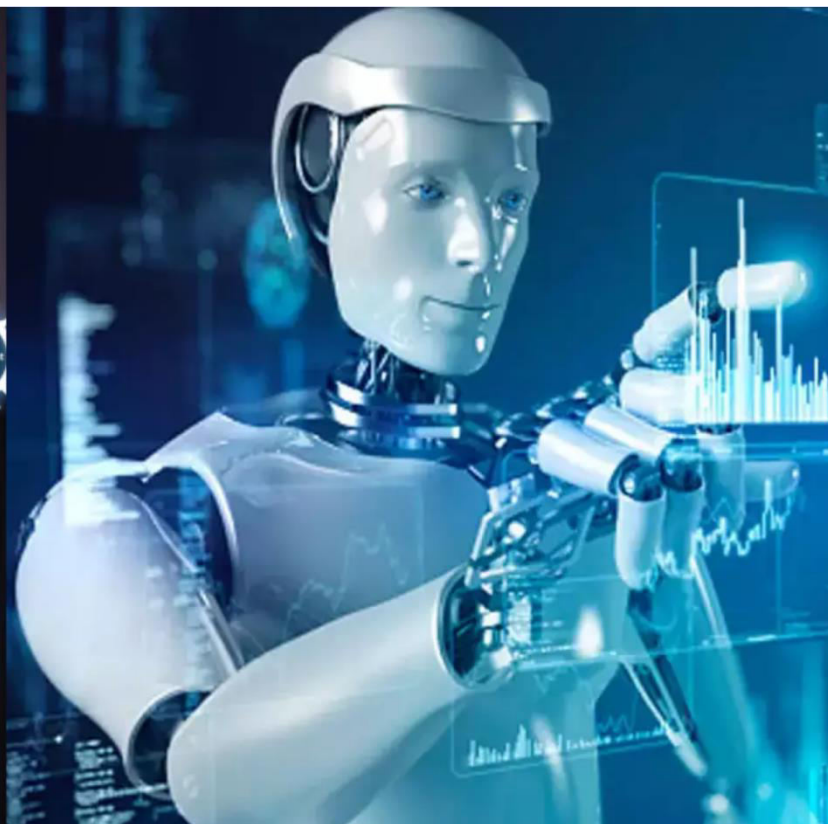




International Journal of Innovative Research in Science Engineering and Technology (IJIRSET)

(A Monthly, Peer Reviewed, Refereed, Scholarly Indexed, Open Access Journal)



Impact Factor: 8.699

Volume 14, Issue 11, November 2025

From Russian Highways to U.S. Critical Infrastructure: AI for Safer HazMat Transportation

Novikov Roman Valentinovich

Head of the Federal Road Agency (Rosavtodor), Russia

ABSTRACT: Transporting hazardous materials has always been one of the most complex and risk-sensitive operations in the modern economy. Every day, thousands of tankers, railcars, and cargo vehicles move through industrial zones and densely populated regions carrying chemicals, fuels, and toxic compounds. One accident or miscalculation can trigger cascading consequences: environmental damage, mass evacuations, economic losses, and public mistrust.

For decades, safety in hazardous-material logistics depended on training, routing discipline, and regulatory oversight. Yet as infrastructure networks grow denser and climate events become more unpredictable, traditional methods struggle to keep pace. Into this high-stakes environment enters a new generation of intelligent systems — artificial intelligence designed not to replace human expertise but to expand its reach. One of the engineers leading this frontier is Alexander Snurnikov, a systems designer who began his career working on transportation automation in Eastern Europe and has since brought his research and patents to the United States. His work, focused on AI-driven hazardous cargo routing and risk monitoring, provides a glimpse of how intelligent algorithms could reshape the nation's approach to critical transport safety.

Snurnikov's concept builds on two decades of experience in logistics and control systems. His patented AI-Driven Hazardous Cargo Routing and Risk Monitoring System integrates real-time data from sensors, weather feeds, and geospatial analytics to predict and prevent incidents before they occur. It is an evolution from static compliance tools to adaptive safety networks that think and react faster than human operators can.

I. UNDERSTANDING THE HAZMAT CHALLENGE

The U.S. Department of Transportation's Pipeline and Hazardous Materials Safety Administration (PHMSA) oversees the movement of over 2.2 billion tons of hazardous materials annually. While the system's safety record is strong, even isolated failures can have far-reaching consequences. From tanker rollovers to rail leaks and highway fires, incident patterns show that human error, fatigue, and poor situational awareness remain leading causes.

The sheer complexity of U.S. logistics adds another layer of risk. Millions of shipments pass through environments affected by congestion, aging infrastructure, extreme weather, and, increasingly, cyber vulnerabilities. A single hazardous-cargo truck can cross multiple jurisdictions and data networks within hours, each with its own regulations and communication protocols.

"HazMat transportation is not just a question of physics or logistics," Snurnikov explains. "It is a question of coordination and awareness. The more data a system can process in real time, the safer it becomes."

His approach reframes hazardous-material safety as a data-integration problem. Instead of relying solely on compliance manuals or operator judgment, Snurnikov's platform continuously evaluates dynamic variables: traffic density, population exposure, weather forecasts, and vehicle telemetry. The AI weighs each factor against predefined safety parameters and proposes optimized routing or operational adjustments. This design philosophy aligns with PHMSA's "Safe Transport of Hazardous Materials" strategy, which emphasizes predictive analytics and digital traceability as future standards. By embedding intelligence into the logistics fabric, Snurnikov's system seeks to detect weak signals before they escalate — from pressure changes in a tanker to the early signs of driver fatigue.

II. THE ARCHITECTURE OF PREDICTIVE SAFETY

At its core, Snurnikov's patented system connects three main layers: sensors, analytics, and control.

Sensor Layer: onboard devices monitor temperature, pressure, vibration, and potential leakage. Environmental sensors track weather, road friction, and visibility.

Analytic Layer: cloud-based algorithms process this data in real time, calculating probabilistic risk scores for each route segment.

Control Layer: decision modules issue recommendations to drivers and dispatchers, including rerouting, speed adjustment, or hazard isolation in case of an incident.

Each component functions autonomously but feeds into a shared AI engine. When conditions change, for example, a thunderstorm forms over a highway or traffic halts near an urban area, the system recalculates exposure in seconds and sends updated instructions. In controlled simulations, Snurnikov's model achieved up to 25 percent reduction in incident probability and 40 percent faster emergency-response coordination compared to traditional dispatch systems.

"Time is the ultimate safety variable," he says. "If you can shorten the reaction window, you change the entire outcome."

Importantly, the platform is designed for transparency. Dispatchers and regulators can view the decision-making process, seeing exactly which factors led to each recommendation. This explainable AI feature supports compliance audits and fosters trust among users — a crucial factor when lives and public safety are at stake.

III. INTEGRATION WITH U.S. INFRASTRUCTURE

Adapting advanced AI systems to American conditions requires more than technical compatibility. It demands alignment with regulatory frameworks, communication standards, and institutional trust. Snurnikov's ongoing collaborations with technology partners in Texas and the Midwest focus on testing how his algorithms can integrate with U.S. telematics systems, Department of Transportation data layers, and state-level hazard management platforms. These pilots connect fleet operators, emergency services, and regulatory bodies through a single data channel. The goal is to enable "mutual visibility" — so that when one vehicle detects a potential anomaly, regional control centers can immediately assess and respond. Such interoperability could support national efforts like the Department of Homeland Security's Critical Infrastructure Security and Resilience (CISR) strategy, which calls for predictive and collaborative tools across the transportation sector.

Snurnikov's work also echoes the "Safe System Approach" advocated by the Federal Motor Carrier Safety Administration (FMCSA), which emphasizes proactive safety management over reactive enforcement. His algorithms essentially operationalize that principle, continuously identifying where risk is rising and why.

Yet integration with critical infrastructure also raises questions of cyber resilience. The more connected the system, the greater the need for robust encryption, authentication, and data redundancy. Snurnikov acknowledges the challenge but sees it as solvable through layered security architecture. "The data must flow quickly, but it must also be protected at every stage," he notes. "Security is not separate from safety — it is part of it."

Human factors and machine learning

No AI model can function effectively without understanding human behavior. For Snurnikov, this realization emerged early in his research when studying driver fatigue detection. In many HazMat incidents, mechanical failure is secondary to cognitive overload or delayed reaction. His system therefore incorporates human factors directly into its prediction loop. Cameras and physiological sensors analyze eye movements, micro-expressions, and steering patterns to estimate alertness. Machine-learning models cross-reference this data with environmental conditions and operational stress. If the system detects reduced vigilance, it may suggest a rest stop, transfer control to another driver, or alert the dispatcher.

Snurnikov describes this interaction as “cooperative intelligence” rather than automation. “The driver remains in command,” he says. “The system simply extends awareness and removes the blind spots.” This approach resonates with broader U.S. safety programs such as the National Roadway Safety Strategy, which emphasizes integrating human-centered design with technology. By embedding behavioral analytics into vehicle systems, the AI complements human strengths instead of replacing them.

The broader security dimension

Hazardous-material transport occupies a unique position at the intersection of commerce and national security. It underpins energy supply chains and manufacturing yet carries inherent vulnerabilities. The Department of Homeland Security identifies HazMat logistics as part of the Transportation Systems Sector, one of sixteen critical infrastructure categories requiring coordinated protection.

Snurnikov’s system contributes to that mission by providing real-time situational awareness across multiple jurisdictions. In potential emergency scenarios, such as natural disasters or industrial accidents, his AI could assist FEMA and state agencies by mapping safe diversion routes or identifying at-risk populations in the path of a mobile hazard. The technology also holds potential in countering deliberate threats. By recognizing anomalous routing behavior, unauthorized stops, or communication loss, the system can flag suspicious activity and notify authorities. “AI does not prevent intent,” Snurnikov says. “But it can expose inconsistency. A truck that deviates from its certified route or turns off its sensors without reason should never go unnoticed.”

This capacity for anomaly detection makes the system valuable not only for everyday logistics but also for emergency planning and intelligence support. It could help bridge the gap between civilian transportation oversight and homeland security operations — a domain often separated by institutional boundaries.

From prototype to pilot deployment

Developing an AI safety architecture in the laboratory is one challenge; proving its reliability on the road is another. Over the past two years, Snurnikov and his collaborators have been working to translate the principles of predictive routing into deployable modules for real fleets. One early experiment took place in partnership with a hazardous-goods carrier operating along the Gulf Coast corridor. Trucks carrying pressurized chemicals were equipped with multi-sensor units that fed continuous telemetry to a cloud server. The AI engine analyzed changes in tank pressure, temperature, and vibration, correlating them with location, weather, and driver activity. When a tanker entered a section of road under a severe-weather alert, the system automatically recommended a detour that balanced safety and time. Dispatchers later confirmed that the alternative route avoided a flash flood that temporarily closed the original path. “The goal is not to automate decisions but to augment judgment with live data,” Snurnikov says. “In an environment where conditions change minute to minute, information is the only true control mechanism.”

The project also revealed the importance of interoperability. The test fleet operated under federal HazMat regulations but crossed state lines into areas with varying reporting formats. To harmonize data exchange, Snurnikov’s team designed an adapter layer that translates between different telematics standards. This capability is now being evaluated by several U.S. logistics technology providers seeking to create unified platforms for safety compliance.

The role of public-private cooperation

The success of predictive safety technology depends not only on engineering but on collaboration between sectors. Agencies such as the Department of Homeland Security, the Department of Transportation, and the Federal Emergency Management Agency maintain overlapping responsibilities for hazard preparedness. Snurnikov argues that AI can serve as a bridge among them.

“During a major incident, every minute matters,” he says. “If the logistics operator, the state DOT, and the emergency responder can see the same information, they can act as one system.” His platform is designed to provide that shared situational awareness. During simulated emergency drills, AI dashboards displayed live vehicle positions, cargo status, and environmental conditions. When a potential leak was detected, the system automatically generated containment maps and suggested safe evacuation zones based on wind direction and population data.

FEMA analysts who reviewed the model noted its potential to support disaster-response planning, especially for chemical spills and industrial accidents. By combining predictive routing with real-time environmental modeling, agencies could prioritize resources before a crisis escalates. Such integration aligns with the Department of Homeland Security's call for resilience-oriented innovation. Under its Science and Technology Directorate, DHS promotes "shared analytical ecosystems" that fuse public data and private logistics networks. Snurnikov's system fits naturally into this vision, turning individual fleets into contributors to national awareness.

Cybersecurity and trust

The same connectivity that makes intelligent logistics powerful also creates exposure to cyber threats. Ransomware and data manipulation attacks against transportation networks have grown steadily in recent years. According to CISA, at least twenty documented incidents between 2021 and 2024 targeted logistics systems managing hazardous materials.

Snurnikov's design incorporates multiple layers of protection. Critical data — such as cargo identity and routing coordinates — is encrypted both in transit and at rest. Edge-computing nodes inside the vehicle handle initial data processing, reducing the need for constant cloud transmission and limiting attack surfaces. Blockchain-based audit trails record all system commands, ensuring traceability if anomalies occur. He stresses that cybersecurity is not an afterthought but a core function of safety. "You cannot separate physical and digital security," he says. "If someone can alter your route data, they can create a physical hazard."

To validate resilience, his team conducted penetration tests with independent cybersecurity specialists. The findings led to the addition of adaptive authentication modules that adjust security levels based on threat context. If suspicious data traffic is detected, the system can switch to offline mode, preserving essential functionality while isolating the network. Such resilience features mirror the DHS Cybersecurity and Infrastructure Security Agency's (CISA) recommendations for critical infrastructure operators: decentralization, redundancy, and visibility. By applying these principles to HazMat transportation, Snurnikov's system demonstrates how safety and cyber defense can merge into a single operational discipline.

Learning from global experience

Snurnikov's professional roots in Europe shaped his understanding of cross-border logistics and regulatory harmonization. Before bringing his work to the U.S., he participated in EU research projects focused on hazardous-cargo corridors across Poland, Germany, and the Baltic states. These experiences informed his approach to international standards.

European regulations emphasize unified data protocols and central oversight, while U.S. transportation operates through a more decentralized network of state agencies and private carriers. Snurnikov sees value in both systems. "The European model ensures consistency," he explains. "The American model drives innovation. The future is in combining them — setting clear data rules but leaving room for creativity in how they are implemented."

As U.S. and European regulators deepen cooperation under global safety frameworks, there is growing interest in harmonizing AI ethics and performance standards. Snurnikov advocates for transparency and explainability as universal principles. "No one should rely on a black box when public safety is involved," he says. "Whether in Warsaw or Washington, an AI system must be able to explain its logic."

International collaboration also opens opportunities for resilience benchmarking. By comparing data from diverse geographic and climatic conditions, predictive models can learn faster. What a storm teaches in Texas might help prevent a chemical accident in Florida or an industrial spill in Louisiana.

Human oversight in an automated age

Despite his strong focus on AI, Snurnikov repeatedly emphasizes the indispensable role of human judgment. He envisions a balanced model in which algorithms perform analysis, but humans remain the ultimate decision-makers.

In his framework, AI acts as an advisor that filters noise and highlights priorities. Drivers receive alerts, dispatchers receive analytics, and regulators receive compliance summaries, but none are removed from the loop. "Automation should enhance competence, not replace it," he insists. "When people understand why the system recommends

something, they gain confidence in acting on it.” To support this philosophy, training becomes critical. Snurnikov’s team has developed instructional modules for fleet operators, explaining how predictive safety algorithms interpret sensor data and what responses are appropriate. Similar programs are being discussed with community colleges and vocational schools to prepare the next generation of logistics technicians. This approach mirrors Homeland Security’s broader emphasis on workforce readiness in critical sectors. By training personnel to collaborate with intelligent systems, agencies can ensure that technology adoption strengthens rather than fragments operational culture.

Toward intelligent resilience

The integration of AI into hazardous-material transport represents more than a technical innovation; it signals a shift toward a new paradigm of safety governance. Instead of treating accidents as unpredictable, systems like Snurnikov’s treat them as statistically preventable events that can be anticipated and mitigated through continuous learning. The concept of intelligent resilience, systems that sense, adapt, and recover, is gaining traction across infrastructure domains. For transportation, it means that every vehicle, sensor, and dispatcher contributes to collective situational awareness. Data becomes the connective tissue of safety.

Snurnikov envisions a future in which HazMat convoys operate within a national predictive network. Each vehicle shares telemetry with a central AI hub, which identifies emerging risks such as regional storms, cyber disruptions, or road closures. Automated advisories flow back to fleets and local agencies. Over time, the system refines itself through feedback, evolving into a self-improving defense mechanism for critical transport.

Such a vision aligns with Homeland Security’s long-term strategy of integrating artificial intelligence into infrastructure protection. It also resonates with the DOT’s aspiration to move “from compliance to performance,” where safety outcomes are measured dynamically rather than statistically.

Looking ahead

For Snurnikov, the ultimate goal is to make hazardous-material transport as predictable and transparent as aviation. He believes that within a decade, data-driven routing and AI monitoring will become standard across the industry. “Once people see that predictive systems reduce incidents and costs simultaneously, adoption will accelerate naturally,” he says.

He also expects the technology to extend beyond highways. Similar architectures could enhance safety in rail, pipeline, and maritime operations, forming a unified safety web across all hazardous-material logistics. The key, he emphasizes, will be openness and interoperability. “Every mode of transport should communicate in the same language of safety,” he says.

IV. CONCLUSION

As artificial intelligence becomes a cornerstone of homeland security operations, experts increasingly stress the importance of maintaining ethical oversight. Snurnikov’s transparent and modular design exemplifies how advanced technology can support that principle. By turning data into foresight and foresight into prevention, his system transforms the logic of safety from reactive defense to proactive resilience.

REFERENCES

1. Chai, H. (2025). *Machine learning-based accidents analysis and risk early warning for hazardous materials transport*. *Journal of Hazardous Materials* (forthcoming). ScienceDirect
2. Liu, L., & colleagues. (2021). Route optimization of hazardous materials transportation considering risk equity and emergency response times. *Sustainability*, 13(16), 9427. MDPI
3. Liu, L., & colleagues. (2025). Time-varying route optimization of hazardous materials transportation under fluctuating population and environmental risk. *Preprints*. Preprints+[1](#)
4. Ke, G. Y. (2024). Regulating hazardous material transportation: A bi-level network design approach to mitigate risk and control carrier behavior. *Transport Reviews*, (advance online publication). Taylor & Francis Online
5. Sattayaprasert, W., & co-authors. (2008). Creating a risk-based network for HazMat transport: A multiple criteria analysis. *Journal of Hazardous Materials*, 155(1), 1-13. ScienceDirect

6. Gholamizadeh, K., & colleagues. (2025). Advancing hazardous materials transport safety: A systematic review of research trends and gaps (1970–2022). *Safety Science* (in press). ScienceDirect
7. Pipeline and Hazardous Materials Safety Administration. (2025). *PHMSA Incident Statistics and Hazardous Materials Data*. U.S. Department of Transportation. Retrieved from <https://www.phmsa.dot.gov> (as of August 15, 2025) PHMSA^{[+1](#)}
8. Mo, X., & colleagues. (2023). AI-Based Supply Chain Risk Management: Applications, Challenges, and Future Directions. *Journal of Supply Chain & Risk Management*, (Special Issue on AI & Risk). ResearchGate^{[+1](#)}
9. Jahin, M. A., Naife, S. A., Saha, A. K., & Mridha, M. F. (2023). AI in supply chain risk assessment: A systematic literature review and bibliometric analysis (2015–2024). *Preprint*. arXiv
10. Durlik, I., Miller, T., Kostecka, E., & Tuński, T. (2024). Artificial intelligence in maritime transportation: A comprehensive review of safety and risk management applications — lessons for hazardous-cargo logistics. *Applied Sciences*, 14(18), Article 8420. <https://doi.org/10.3390/app14188420> MDPI



INTERNATIONAL
STANDARD
SERIAL
NUMBER
INDIA



INTERNATIONAL JOURNAL OF INNOVATIVE RESEARCH

IN SCIENCE | ENGINEERING | TECHNOLOGY

 9940 572 462  6381 907 438  ijirset@gmail.com



www.ijirset.com

Scan to save the contact details